



Barns Court, Harlow

Asking Price £750,000



MILLERS
ESTATE AGENTS

***GRADE II LISTED BARN CONVERSION *
CLOSE TO GOOD SCHOOLS * FOUR
BEDROOMS *
* FOUR BATHROOMS * DOUBLE GARAGE *
GATED DEVELOPMENT * IMMACULATE
CONDITION ***

Nestled within the exclusive gated development of Barns Court in Harlow, this remarkable semi-detached property offers a unique blend of modern living and historical charm. The property is a Grade II listed barn conversion, showcasing exquisite architectural features that reflect its rich heritage while providing all the comforts of contemporary life.

With four spacious bedrooms and four well-appointed bathrooms, this home is perfect for families or those who enjoy hosting guests. Each bedroom is designed to provide a tranquil retreat, ensuring privacy and comfort. The bathrooms are stylishly finished, offering both functionality and elegance.

The property boasts ample parking, accommodating up to six vehicles, which is a rare find in such a desirable location. Additionally, a double garage provides further convenience and storage options.

The gated nature of Barns Court enhances the sense of security and community, making it an ideal setting for those seeking a peaceful lifestyle without sacrificing accessibility to local amenities. This home is not just a residence; it is a statement of quality living in a picturesque environment.

In summary, this stunning barn conversion in Barns Court is a perfect opportunity for discerning buyers looking for a blend of history, space, and modern convenience. Do not miss the chance to make this exceptional property your new home.





Entrance Hall

Shower Room

7'2 x 4'5 (2.18m x 1.35m)

Living Room

20'0" x 23'6" (6.10m x 7.16m)

Dining Room

17'11" x 12'7" (5.46m x 3.83m)

Kitchen

7'8" x 15'5" (2.34m x 4.70m)

Utility Room

7'8" x 6'5" (2.34m x 1.95m)

Galleried Landing

Bedroom 4

9'6" x 7'3" (2.90m x 2.20m)

Bathroom

9'2 max x 5'5 max (2.79m max x 1.65m max)

Bedroom 1

13'5" x 15'5" (4.08m x 4.69m)

En-suite Bathroom

7'3 max x 5'9 max (2.21m max x 1.75m max)

Bedroom 2

10'2" x 11'10" (3.11m x 3.61m)

En-suite Shower Room

7'4 x 4'6 (2.24m x 1.37m)

Vaulted Bedroom 3

10'11" x 20'0" (3.32m x 6.10m)

Exterior

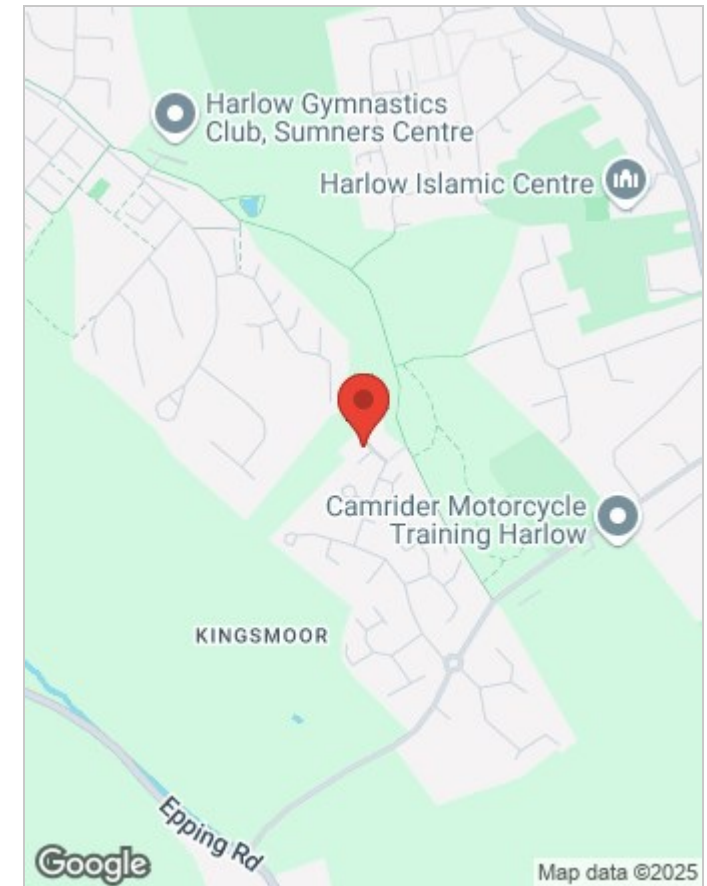
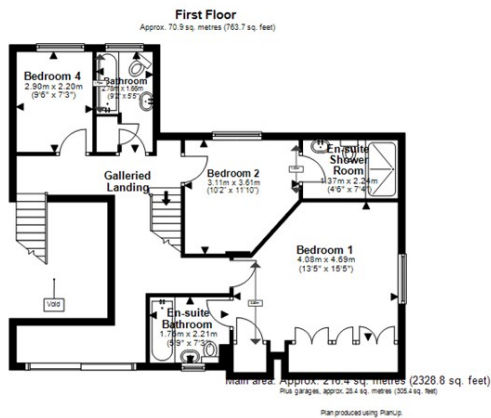
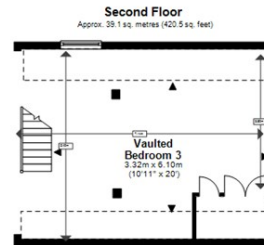
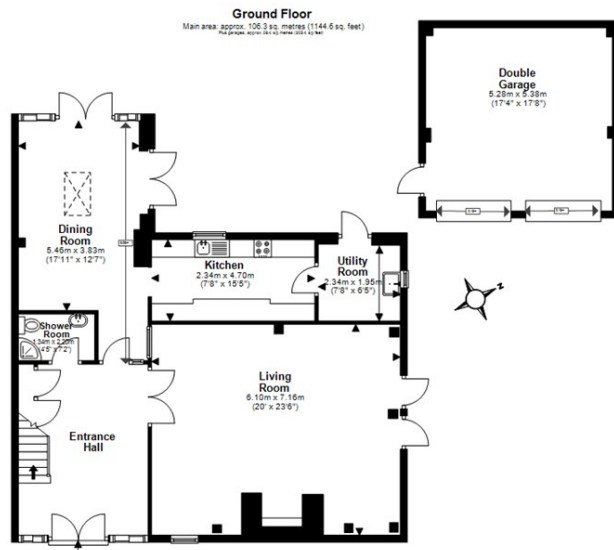
Rear Garden

66'0 max x 42'2 (20.12m max x 12.85m)

Double Garage

17'8 x 17'4 (5.38m x 5.28m)





| Energy Efficiency Rating | | Environmental Impact (CO ₂) Rating | |
|---|-------------------------|--|---|
| | Current | Potential | |
| Very energy efficient - lower running costs | | | Very environmentally friendly - lower CO ₂ emissions |
| (92 plus) A | | | (92 plus) A |
| (81-91) B | | | (81-91) B |
| (69-80) C | | | (69-80) C |
| (55-68) D | | | (55-68) D |
| (39-54) E | | | (39-54) E |
| (21-38) F | | | (21-38) F |
| (1-20) G | | | (1-20) G |
| Not energy efficient - higher running costs | | | Not environmentally friendly - higher CO ₂ emissions |
| England & Wales | EU Directive 2002/91/EC | | England & Wales |
| | | | EU Directive 2002/91/EC |

Viewing

Please contact our Millers Office on 01992 560555 if you wish to arrange a viewing appointment for this property or require further information.

These particulars, whilst believed to be accurate are set out as a general outline only for guidance and do not constitute any part of an offer or contract. Intending purchasers should not rely on them as statements of representation of fact, but must satisfy themselves by inspection or otherwise as to their accuracy. No person in this firm's employment has the authority to make or give any representation or warranty in respect of the property.